

THIS MAP WAS PREPARED FOR ASSESSMENT PURPOSE ONLY.

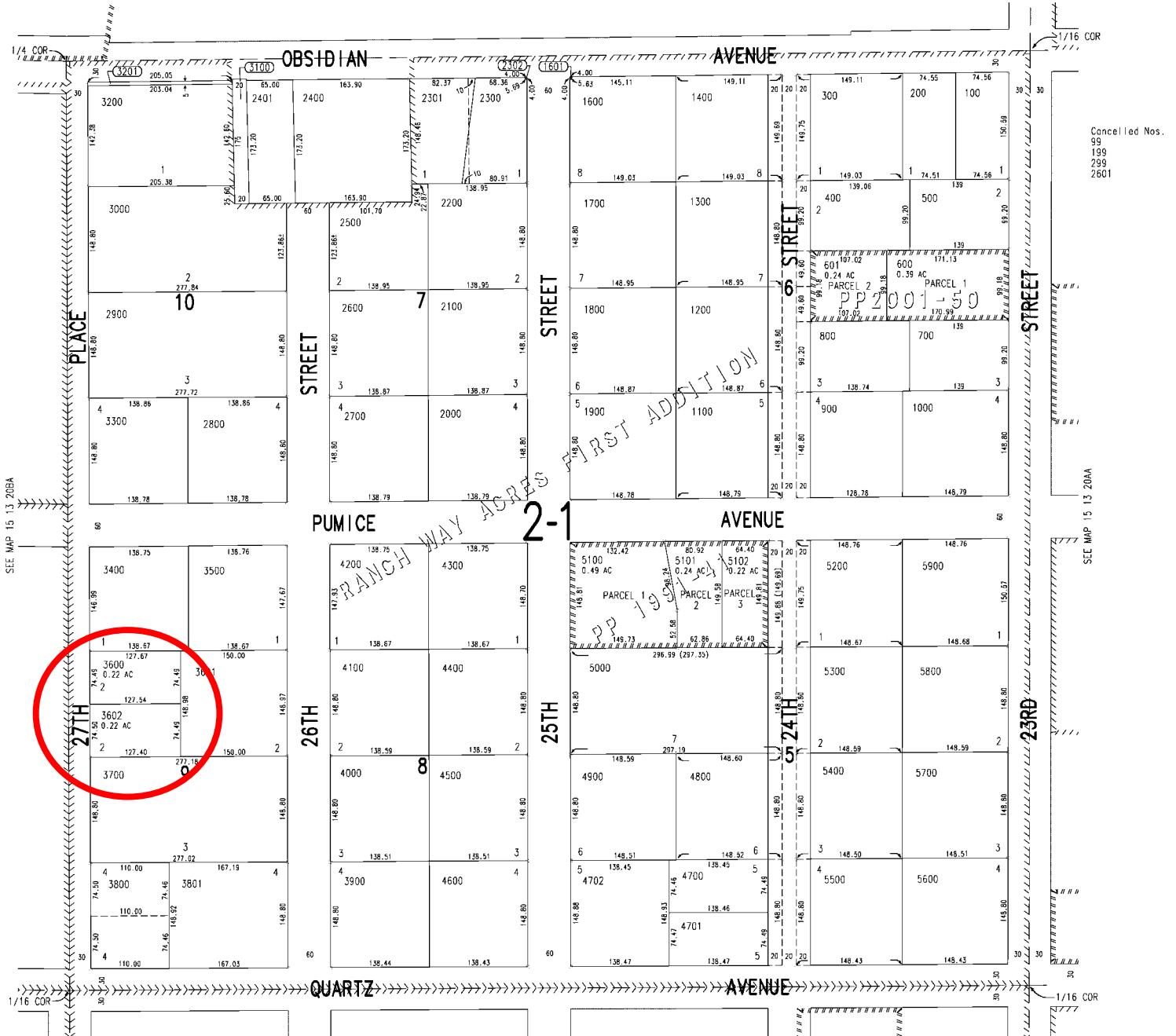
REVISED: 05/01/2003

NW1/4 NE1/4 SEC. 20 T.15S. R.13E. W.M. DESCHUTES COUNTY

15 13 20AB

1" = 100'

SEE MAP 15 13 17



SEE MAP 15 13 20BA

SEE MAP 15 13 20AA

SEE MAP 15 13 20AC

15 13 20AB